

**PLAN VIEW**  
SCALE: 1"=1'-0"

**HARDWARE:**

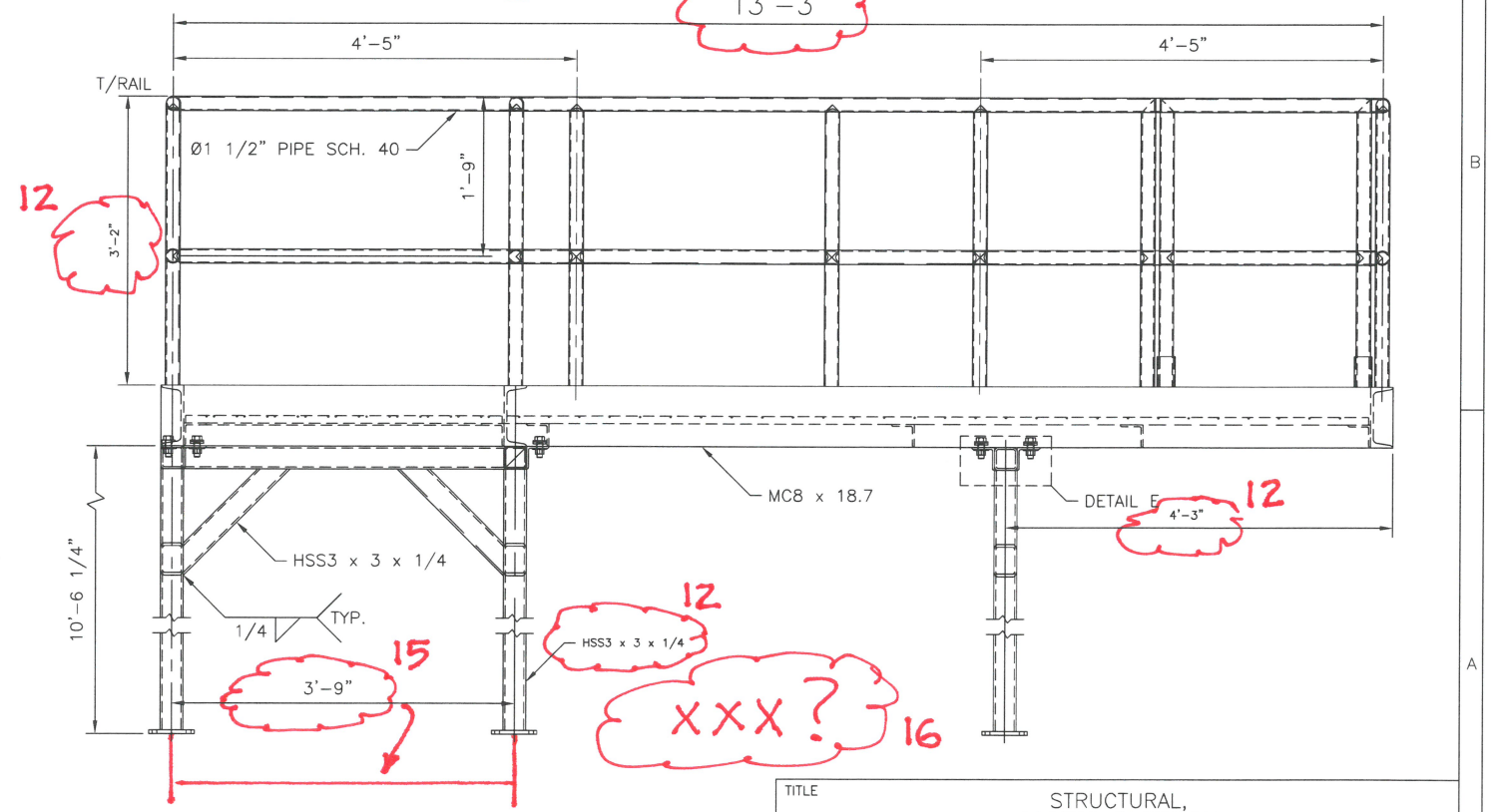
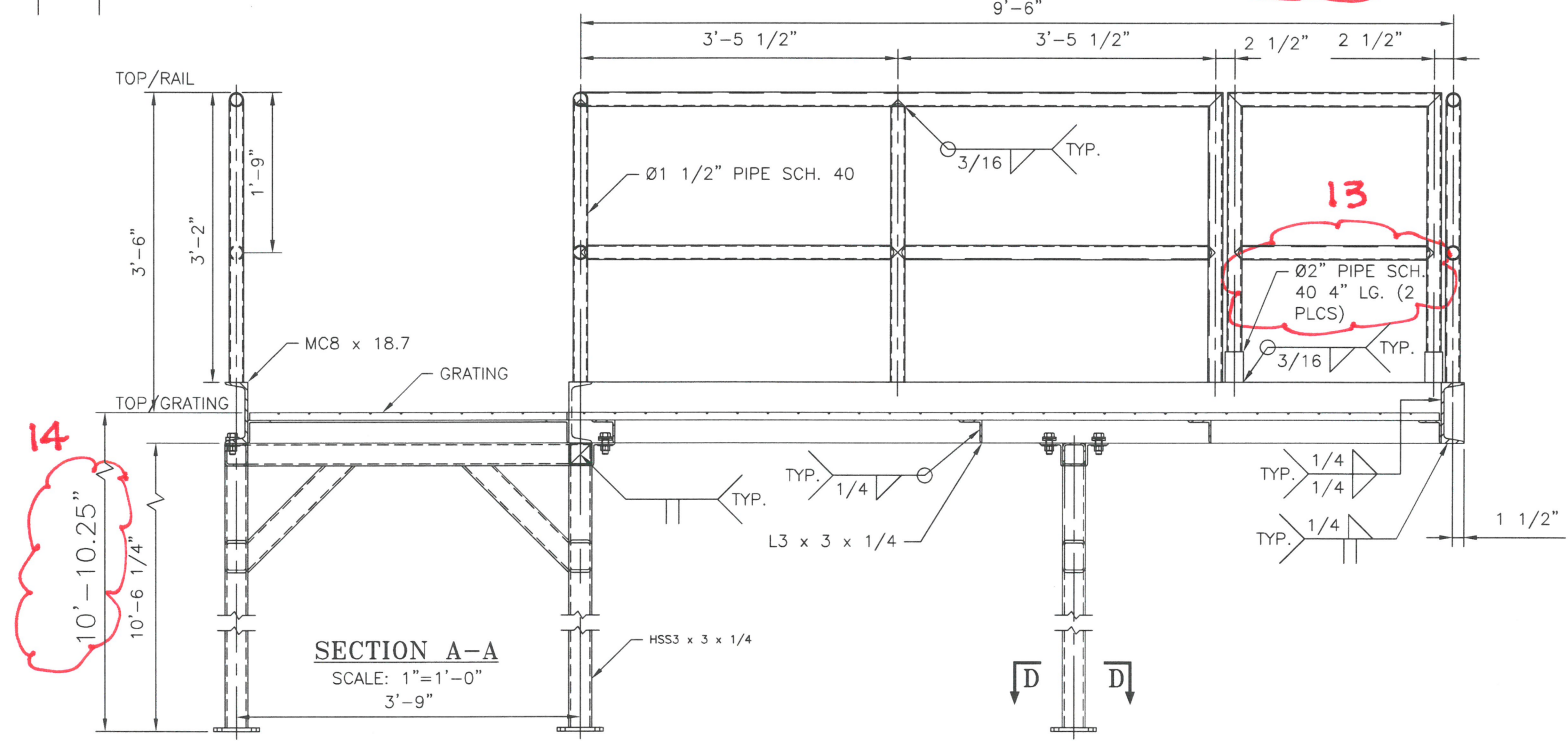
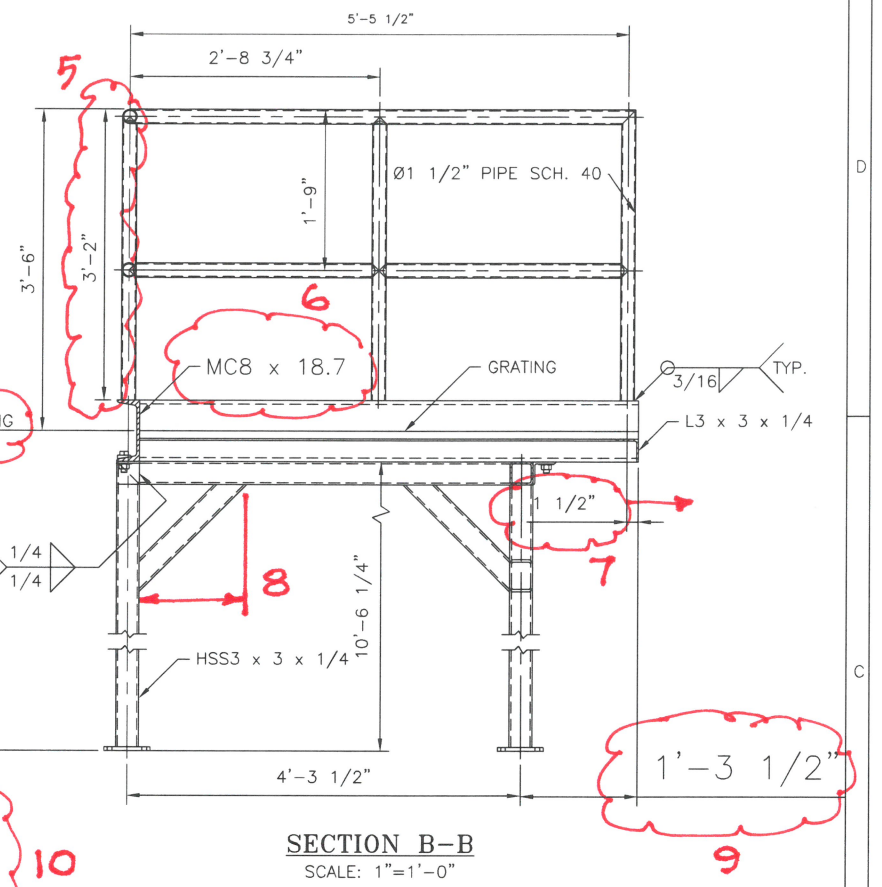
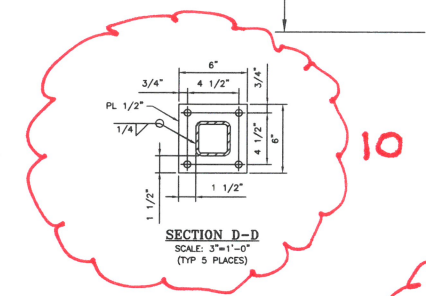
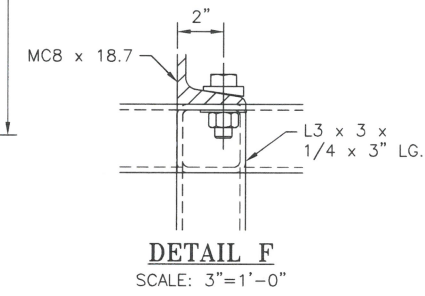
- BOLTS SHALL MEET THE REQUIREMENTS OF ASTM A325, NUTS SHALL MEET THE REQUIREMENTS OF ASTM A563, AND WASHER SHALL MEET REQUIREMENTS OF ASTM F1554 GRADE 36.
- ALL ANCHOR RODS SHALL MEET THE REQUIREMENTS OF ASTM F1554 GRADE 36.
- ALL ANCHOR RODS, WASHERS AND NUTS SHALL BE HOT-DIP GALVANIZED.  $\phi 1/2"$  THREADED ROD W/WASHER AND NUT.
- AFFIX GRATING TO STANDS USING SADDLE CLIP FASTENERS.

**PAINT:**

- ALL SURFACES SHALL BE PREPARED IN ACCORDANCE WITH SSPC-SP6.
- APPLY 2 PRIME COATS OF SHERWIN-WILLIAMS PRO-CRYL UNIVERSAL PRIMER, PRODUCT #B66W3100W, COLOR: OFF WHITE.
- PLATFORM STEEL: APPLY 2 FINISH COATS OF SHERWIN-WILLIAMS DTM ACRYLIC GLOSS LATEX, PRODUCT #B66W211EW, COLOR: EXTRA WHITE.
- PLATFORM GUARDRAILS: APPLY 2 FINISH COATS OF SHERWIN-WILLIAMS DTM ACRYLIC GLOSS LATEX, PRODUCT #B66W211EW, COLOR: SAFETY YELLOW.

**STEEL:**

- ALL STEEL SHALL MEET THE FOLLOWING ASTM STANDARDS.  
 PLATES.....ASTM A36  
 PIPE.....ASTM A53  
 ANGLE.....ASTM A36  
 CHANNEL.....ASTM A36



|          |                                |  |
|----------|--------------------------------|--|
| TITLE    | STRUCTURAL,<br>ACCESS PLATFORM |  |
| DWG. NO. |                                |  |
| SIZE     | D                              |  |
| ISSUE    |                                |  |